

CMI3000II™ MB

Intelligent, versatile MIG/MAG - for sheet metal welding and MIG brazing

The latest generation of MIG/Mag Welding Machines
— simplicity and state-of-the-art technology

Digital Intelligence

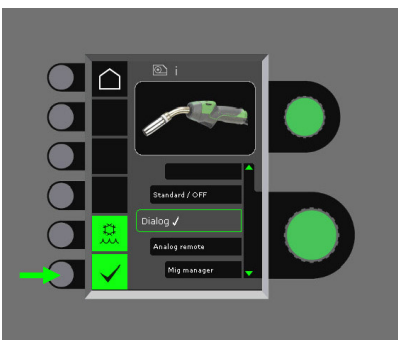
The digital intelligence in the Car-O-Liner **CMI3000II MB**, 400V makes it easy to find the program relevant to the individual car make, be it MIG brazing in high-tensile steels or welding in ferritic, stainless steels. The program packages are designed for leading car makes, even those in hardenable aluminium.

Process improvement and less post-treatment

MIG brazing high-tensile steel is a specialty of **CMI3000II**. Joining of special alloy thin plates requires a gentle process. This process and much more is built into the memory of the **CMI3000II**. The result speaks for itself; the corrosion and strength properties of the material are maintained and only little post-treatment is required owing to a minimum of weld spatter and heat input. And there is hardly any deformation of car body plates.

Program Wizard™

The Program Wizard is a built-in guide in the control panel which allows the welder to find the right welding program for an assignment without having to browse through all available programs, and there is no risk of making wrong choices. By asking three or four simple questions, for example about the type of wire and gas, the Program Wizard will guide you to the appropriate program for your job.



Remote control using the
MIG-A Twist® welding torch

CMI3000II comes with the MIG-A Twist torch in an award-winning design. The unique, turnable swan neck of the MIG-A Twist allows access to hard-to-reach places. It is possible to mount different modules on top of the torch for adjustment of the most important welding parameters.

Features and Benefits

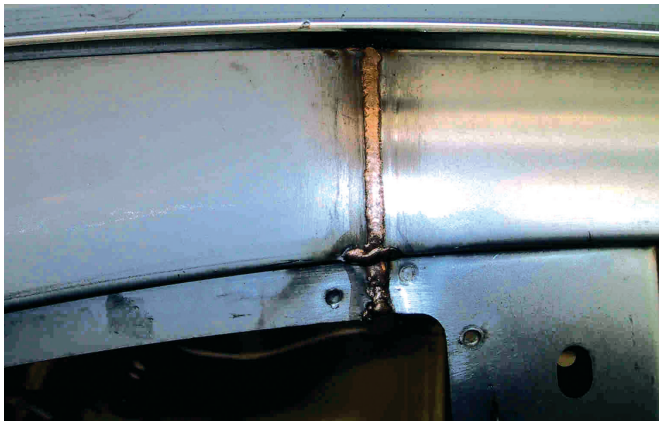
- **True Spray Pulse function** will not damage heat sensitive materials like aluminum or galvanized steel
- **Transfer of machine software** and latest features by SD card - free download
- **Pulse and Quatro Pulse Modes** for heat sensitive materials
- **Designed to meet future demands** for materials and gas combinations
- **Large, user friendly controls** allow technician to focus on welding
- **Large operating range** from the Push-pull torch

Digital memory

Digital memory which allows for saving of up to 200 individual welding jobs and easy recall of favourite settings via SD card to/from PC.

Lower power consumption – smaller environmental footprint

CMI3000II is environmentally friendly owing to new welding technology and use of low-energy components - an important factor now that CO2 emissions and increasing power consumption are important factors in regards to our environmental footprint.



MIG Brazing

Many years of close cooperation with leading car manufacturers has resulted in a wealth of experience in the joining of special alloyed steels. MIG brazing with the **CMI3000II** is the perfect choice when welding galvanized and high strength steels as this method allows for the maintenance of anti-corrosion coatings and structural strength.

Quattro Pulse

The **CMI3000II** is equipped with the revolutionary Quattro pulse which enables the welder to produce the optimum droplet pinch off of the wire. This is particularly important when welding thin materials as it keeps the heat input to a minimum consequently maintaining the strength and anti-corrosion coating of the steel while at the same time producing a tig-like weld.

Large range of accessories

Besides the advanced welding torch there is a wide range of accessories for **CMI3000II MB**.

- Ergonomic, adjustable welding torches for easy access
- Wire drive rolls for all types of wire
- Dialog and sequence torch
- Auto transformer 230-500V

Technical Data

Art. No. 47661 CMI3000II MB, 400V

Art. No. 47662 CMI3000II MB, 230 - 500V

Input voltage	3 x 400 V 3 x 230V - 500V)* 50-60Hz
Fuse	16A
Effective mains current	15.7 A
Current range DC	15 - 300A
Duty cycle 20°	300A/100%
Duty cycle 40°	270 A/100%
Duty cycle 40°	300 A/80%
Open circuit consumption	40 W
Mains voltage max	18.1 A
Efficiency rate	0.85
Power factor	0.90
Open circuit voltage	69-76 V
Application class	CE, S
Protection class	IP23
Norm	IC60974 -1, -2, -5, -10
Dimensions L x W x H	92.5 x 52.4 x 90.6 cm
Weight (incl. supply cable)	58 kg
* Configured with auto transformer	

www.car-o-liner.com



Follow us on
Facebook



Discover us on
car-o-liner.com



Watch us on
YouTube

CAR-O-LINER®

Car-O-Liner is recognized for its leadership in the marketplace by continuously delivering high quality products and exceptional customer service.

Distributor